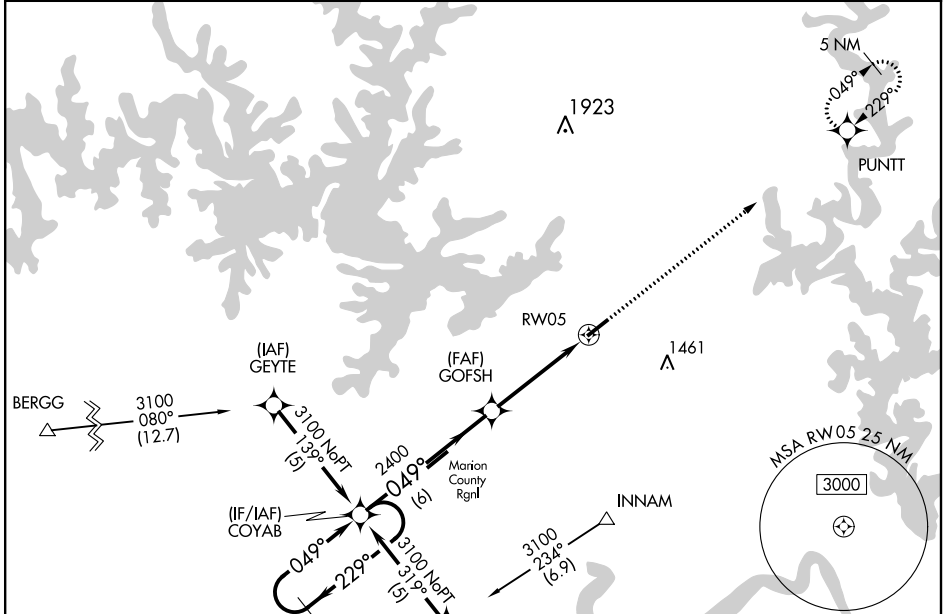


WAAS CH 69300 W05A	APP CRS 049°	Rwy Idg 5001 TDZE 928 Apt Elev 928
--	------------------------	---

RNAV (GPS) RWY 5

MOUNTAIN HOME/BAXTER COUNTY (BPK)

<p>⚠ DME/DME RNP-0.3 NA. Visibility reduction by helicopters NA. ⚠ For uncompensated Baro-VNAV systems, LNAV/VNAV NA below -16°C (4°F) or above 54°C (130°F). If local altimeter setting not received, use Flippin altimeter setting and increase all DAs/MDAs 60 feet. Baro-VNAV NA when using Flippin altimeter setting.</p>	<p>MISSED APPROACH: Climb to 3000 direct PUNTT and hold.</p>	
<p>ASOS 133.975</p>	<p>MEMPHIS CENTER 126.85 281.55</p>	<p>UNICOM 123.0 (CTAF) 0</p>



SC-1, 12 NOV 2015 to 10 DEC 2015

SC-1, 12 NOV 2015 to 10 DEC 2015

		ELEV 928	TDZE 928
5 NM Holding Pattern		3000	PUNTT
<p>3100 ← 229° / 049° →</p> <p>COYAB</p> <p>2400</p> <p>GOFSH</p> <p>RW05</p> <p>6 NM 4.4 NM</p>		<p>GS 3.00° TCH 44</p>	
CATEGORY	A	B	D
LPV DA	1201-1	273 (300-1)	NA
LNAV/VNAV DA	1250-1¼	322 (400-1¼)	NA
LNAV MDA	1280-1	352 (400-1)	NA
CIRCLING	1400-1	472 (500-1)	1400-1½ / 472 (500-1½)

