

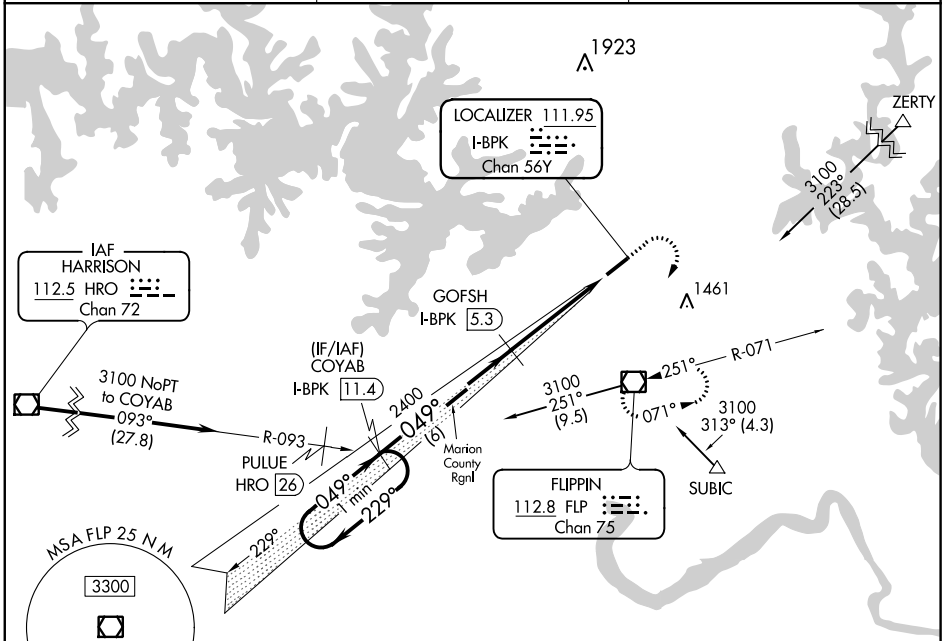
LOC/DME I-BPK 111.95 Chan 56 (Y)	APP CRS 049°	Rwy Idg 5001 TDZE 928 Apt Elev 928
---	------------------------	---

ILS or LOC/DME RWY 5
MOUNTAIN HOME/BAXTER COUNTY (BPK)

⚠ If local altimeter setting not received, use Flippin altimeter setting and increase DA to 1225 feet and all MDAs 60 feet. Visibility reduction by helicopters NA.

MISSED APPROACH: Climb to 1800 then climbing right turn to 3100 direct FLP VOR/DME and hold.

ASOS 133.975	MEMPHIS CENTER 126.85 281.55	UNICOM 123.0 (CTAF)
------------------------	--	-------------------------------



SC-1, 12 NOV 2015 to 10 DEC 2015

SC-1, 12 NOV 2015 to 10 DEC 2015

ELEV 928	TDZE 928
----------	----------

DME REQUIRED

Use I-BPK DME when on the localizer course.

One Minute Holding Pattern	COYAB I-BPK 11.4	1800	3100	FLP
----------------------------	------------------	------	------	-----

CATEGORY	A	B	C	D
S-ILS 5	1178-¾	250 (300-¾)		NA
S-LOC 5	1260-1	332 (400-1)		NA
CIRCLING	1400-1	472 (500-1)	1400-1½ 472 (500-1½)	NA

